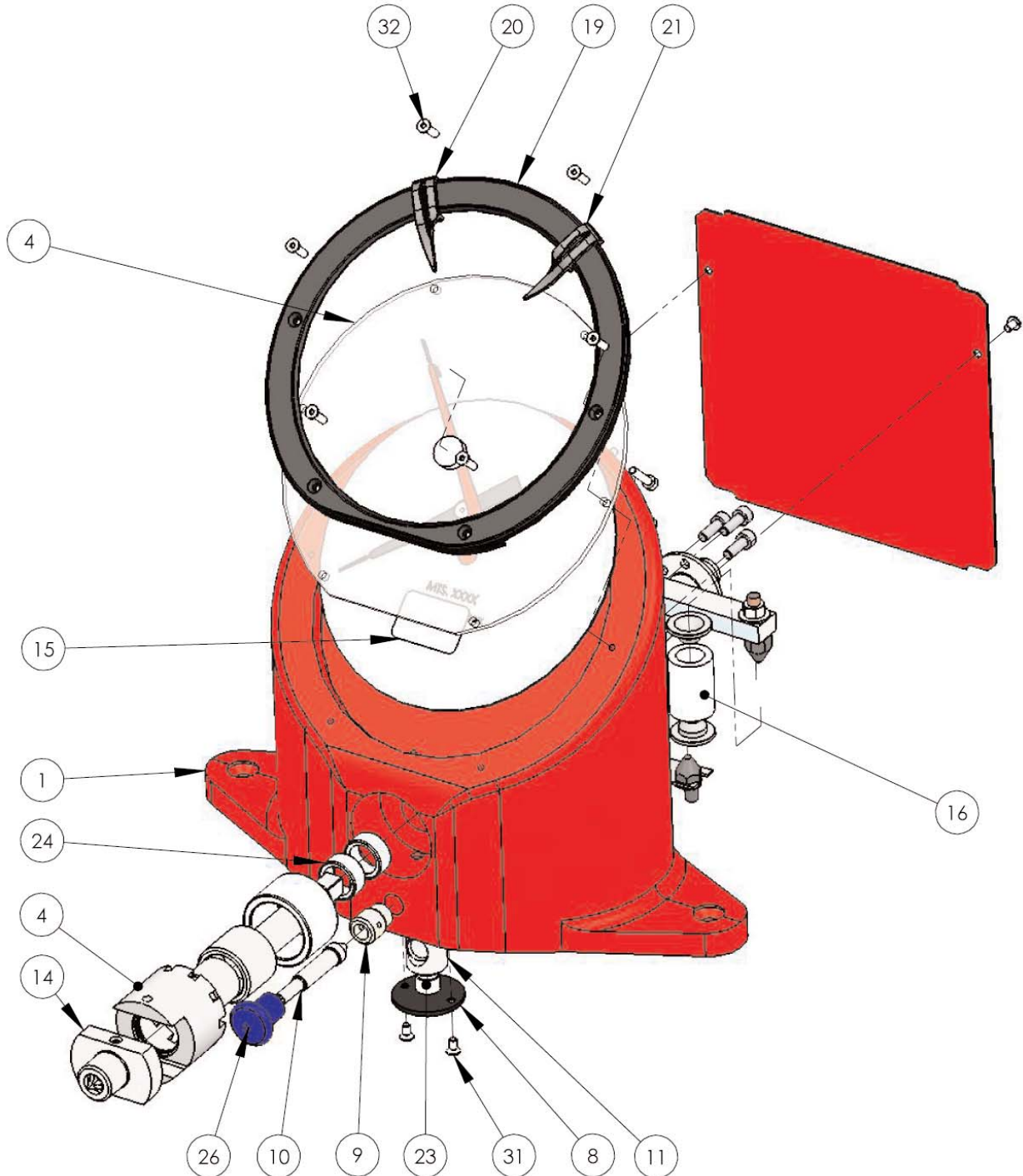


# MTS Dial Analyzers

Version 1.0 (9/7/07)







# MTS Dial Analyzers

No.	Part Number	Description	Qty.
1.	20-D28290	MT casting	1
2.	20-B28330	Spindle Assembly	1
	20-B28270	Shaft	1
	20-A28240	Drive	1
	20-A28220	Retainer	1
	20-P17300	CSK SKT Screw - M4 x 10	1
	20-P30280	Clutch INA - HF2520	1
3.	20-B28320	Arm Assembly	1
	20-B28250	Arm	1
	20-A21960	Eccentric Spring Pivot	1
	20-A19370	Adjuster Screw	1
	20-A29200	Arm Bush	1
	20-P16380	SKT Set SCR Cup PT M3x4	1
	20-P17280	Hexagon Nut - M5	1
	20-P15860	Washer - M5 Class "C"	1
	20-P17330	SKT Cap SCR M4 x 12	2
4.	20-B28340	Window Assembly	1
5.	20-B28360	Pointer	1
6.	20-A11010	Spring Plate - ADS	2
7.	20-A28130	Back Stop	1
8.	20-A28150	Spring Plate	1
9.	20-A28160	Tube Nut	1
10.	20-A28170	Plunger	1
11.	20-A28180	Lock	1
12.	20-A28190	Spring Pivot Lock	1
13.	20-A8200	Eccentric Spring Pivot	1
14.	See table below	Drive Adapter Assembly	1
15.	20-A284600	Label	1
16.	See table below	Main Spring	1
17.	20-A98550	Washer	1
18.	20-B28300	Back Plate	1
19.	20-B29390	Bezel	1
20.	20-B29400	Pointer - Left	1
21.	20-B29410	Pointer - Right	1
22.	See table below	Dial	1
23.	20-P30300	Spring Flexo C1-2734-2M	1
24.	20-P30290	Torrington B85	2
25.	20-P24520	Pan HD Pozi SCR M3 x 16	2
26.	20-A92762	Lock Knob	1
27.	20-See table below	Rack & Pinion Assembly	1
28.	20-P15270	M3 x 8 Button HD	3
29.	20-P16380	SKT Set SCR Cup PT M3 x 4	1
30.	20-P17330	SKT Cap SCR M4 x 12	1
31.	20-P29330	CSK SKT SCR M3 x 6	2
32.	20-P19780	M3 x 12 CSK SKT SCR	6

Model	Main Spring	Dial	Rack & Pinion	Drive Adapter
MTS 35	20-A13882	20-B28390	20-A29860	20-A28310
MTS 130	20-A83260	20-B28400	20-A12688	20-A28310
MTS 400	20-A16760	20-B28410	20-A12688	20-A28310
MTS 1200	20-A48130	20-B28420	20-A12684	20-A28450
MTS 2500	20-A73190	20-B28430	20-A12684	20-A28450